

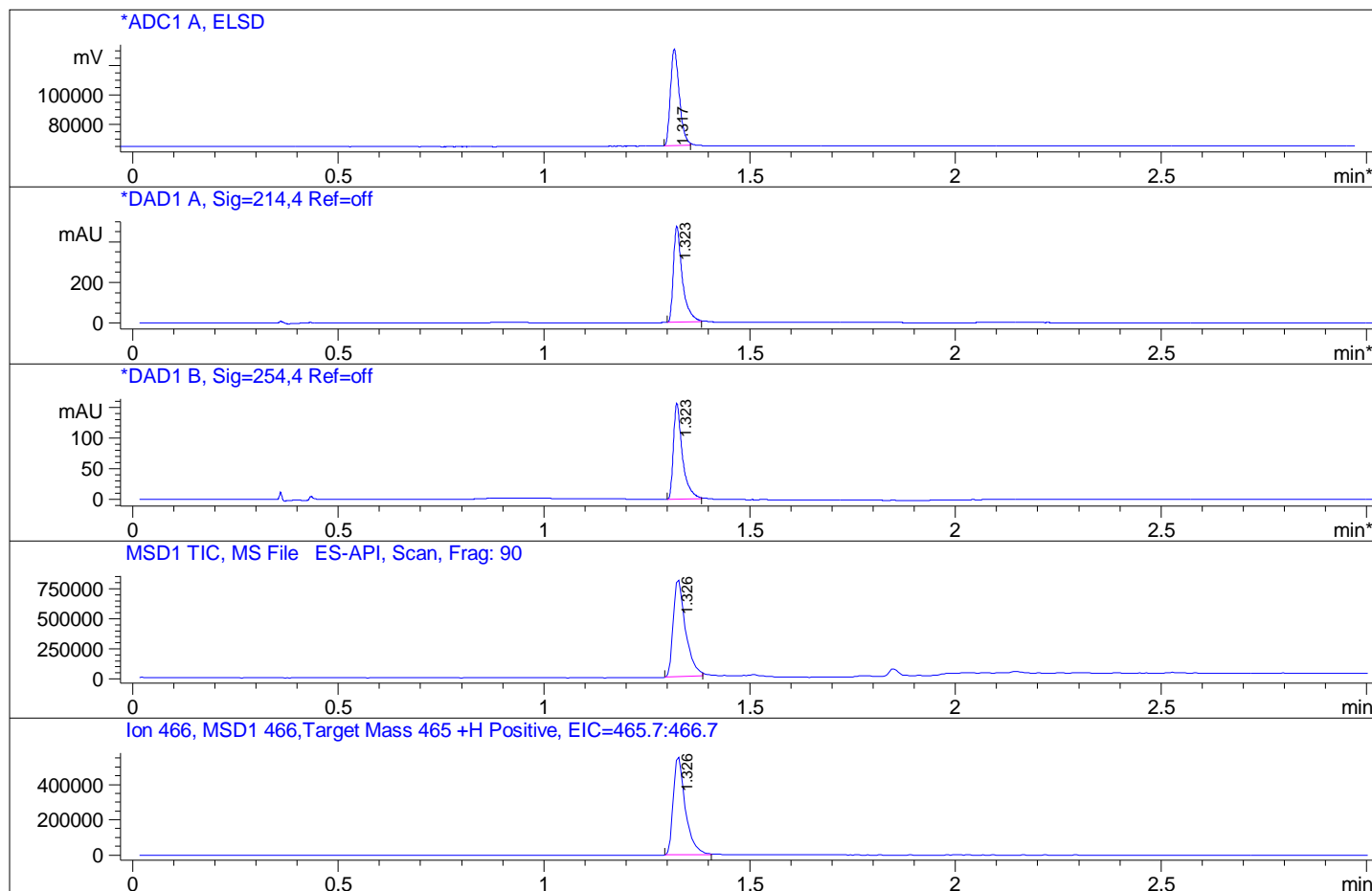
Injection Date : 30 Jun 10

Tgt Mass(EZX) : 465.00

Spec. Reported : MS Integration

Inj Volume : 1 ul

Method Info : Mobile Phase: A: water(0.01%TFA) B: ACN(0.01%TFA)  
Gradient: 5%-95% B in 1.2min  
Flow Rate: 1.8 mL/min  
Column: XBridge, 3.5um, 50\*4.6mm  
Oven Temperature: 50 C



Integration Results for ADC1 A, ELSD

| RetTim | Width | Area     | Height   | Area%  |
|--------|-------|----------|----------|--------|
| 1.32   | 0.02  | 98862.38 | 65779.32 | 100.00 |

Integration Results for DAD1 A, Sig=214,4 Ref=off

| RetTim | Width | Area   | Height | Area%  |
|--------|-------|--------|--------|--------|
| 1.32   | 0.02  | 714.25 | 473.20 | 100.00 |

Integration Results for DAD1 B, Sig=254,4 Ref=off

| RetTim | Width | Area   | Height | Area%  |
|--------|-------|--------|--------|--------|
| 1.32   | 0.02  | 235.64 | 156.00 | 100.00 |

Ret. Time: 1.33 <<<< POSITIVE SPECTRA >>>>

